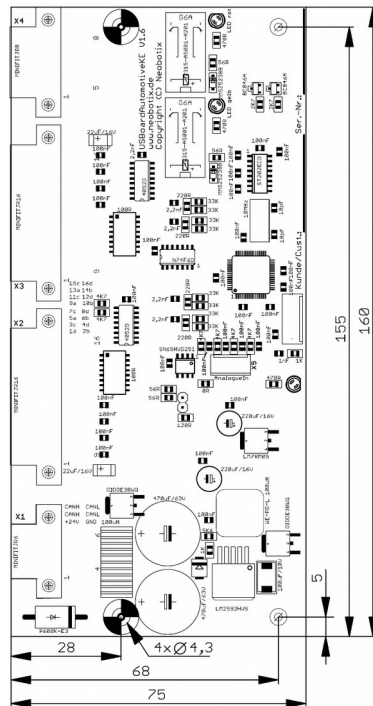
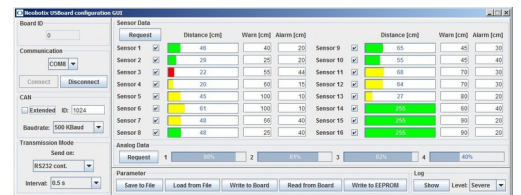
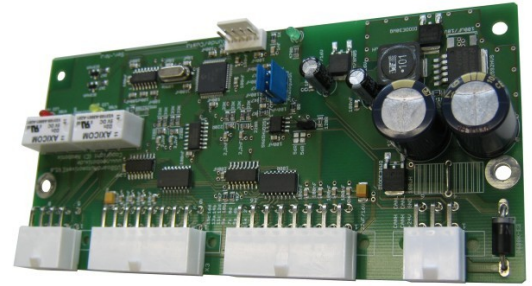


USBoard

THE USBoard allows customers to add up to 16 ultrasonic sensors to their system. This provides autonomous robots or self driving vehicles with valuable additional information about their environment. The sensors can be placed wherever they are needed to fill gaps that cannot be covered by other sensors.

THE MEASUREMENTS of all sensors are available via CAN or serial connection. Two relay outputs indicate that an object was detected within the warning or alarm range.

CONFIGURATION of the USBoard is done by an intuitive graphical user interface. This Java GUI is platform independent and uses any RS232 connection (COM port) to connect to the USBoard. For each sensor a warning and an alarm distance can be set individually.



INCLUDED IN DELIVERY

- USBoard
- Graphical user interface
- Operating manual

ACCESSORIES

- Ultrasonic sensors
- Configuration cable
- Sensor cables
- Connector set for USBoard
- Connector set for sensor

TECHNICAL DATA

Supported sensors	16 x Bosch ParkPilot URF6 / URF7
Supply voltage	9 VDC – 60 VDC, max. 5 W
Communication	CAN, RS232
Inputs	4 x analogue (0 V – 5 V)
Outputs	2 x relays (warning / alarm distance, changeover contacts)
Configuration	By graphical user interface (Java)
Measurement	0.15 m up to 1.5 m, configurable warning and alarm distance
Safety approved	No